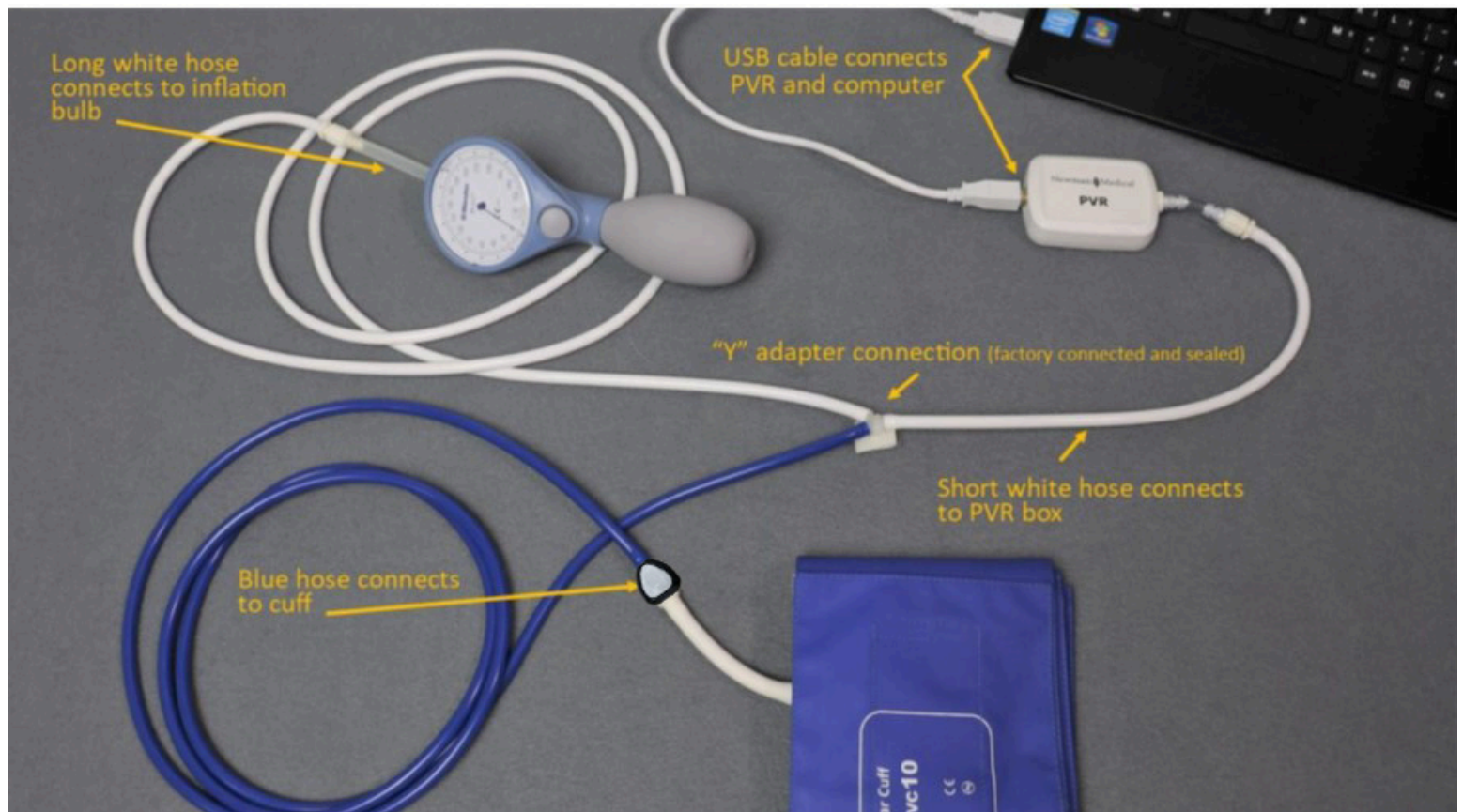




simpleABI

1. Remove all materials from packaging.
2. Check that inventory matches packing list.
3. Plug included thumb drive into your computer to download the simpleABI software.
4. Plug PVR hardware into computer using included USB cable.
5. Use tubing assembly, as shown below, to attach inflation bulb, PVR box hardware, and cuff tubing.

NOTE: Care should be taken when attaching hoses. Do not overtighten connectors or damage may occur.



For help with downloading simpleABI software, please call 800-267-5549 and select option 4 (Service & Repair)