



DIGIDOP DOPPLERS: ESSENTIAL FOR EFFECTIVE WOUND CARE

Wound care clinics specializing in diabetic and vascular conditions require reliable tools to assess blood flow and promote healing. DigiDop Dopplers by Newman Medical deliver consistent performance and exceptional value, empowering your clinic to provide optimal patient care.

Why Choose DigiDop?

- **Reliable:** 45+ years of Doppler expertise ensure consistent performance.
- **Investment Confidence:** 5-year warranty with no hidden fees for worry-free operation.
- **Exceptional Support:** Access first-class clinical support, online or in-person.
- **Ready to Ship:** Fast US delivery from our Colorado facility.
- **American-Made:** Trust the durability and precision of US manufacturing.
- **Value-Driven:** High-value benefits and features at a competitive price point.

DigiDop Dopplers enhance your capabilities:

- **Accurate Assessment:** Clearly and easily locate and assess blood flow in peripheral vessels.
- **Monitor Healing Progress:** Track changes in blood flow to evaluate the effectiveness of treatments.
- **Improved Patient Outcomes:** Enhance diagnostic accuracy and optimize wound care plans.

5-YEAR WARRANTY

- All parts & labor
- No hidden fees
- No diagnostic fees
- No down time

Invest in DigiDop today and experience the difference that quality, reliability, and support can make for your wound care clinic.



MADE IN

USA

Smart  Recharge
System

Scan or click
to explore
DigiDop Dopplers.



NM0150B



Professional and Sensitive Dopplers

Newman Medical



Over **45 years** in the marketplace; a testament to our longevity and success



Made in the USA for superior quality and performance



5-year all-inclusive warranty for maximum protection and minimized downtime, headaches



Best-in-class customer support; we always answer the phone

DigiDop Classic

- Standard size
- Superior battery endurance compared to competitors



DigiDop II

- Compact size
- Comfortable palm-fitting design
- Equivalent battery endurance to competitors



DigiDop 901

- Ideal for hospital use
- Clear stereo sound from dual top speakers
- Two probe cradles
- Standard drop-on charging pyramid
- Optional wall mount recharger



Vascular Probes



Model D5
5MHz Vascular Probe



Model D8
8MHz Vascular Probe



Model DPPG
Audio TBI PPG Probe

Fetal Probes



Model D2
2MHz Fetal Probe



Model D2W
2MHz Waterproof Fetal Probe



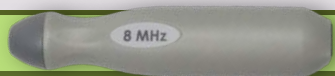
Model D3
3MHz Fetal Probe



Model D3W
3MHz Waterproof Fetal Probe

Interchangeable probes can be used on any DigiDop

Vascular



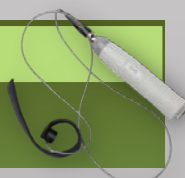
- Great sensitivity
- Ergonomic shape easy to hold, place in sterile glove finger for use in sterile fields
 - **D8 – 8 MHz** - best for shallow vessels like radial, ankle, foot, digits, penile
 - **D5 – 5 MHz** - wider beam, deeper penetration. Good for brachial, carotid, femoral, deep veins

Fetal



- Great sensitivity
- Smooth shape, comfortable for patient, easy to hold and clean
 - **D3 – 3 MHz** - wide angle, ideal for early fetal hearts
 - **D3W** - a unique 3 MHz waterproof probe
 - **D2 – 2 MHz** - deeper penetration
 - **D2W** - 2 MHz - waterproof

DPPG



- Unique audio PPG probe for use on digits. Great for toe-brachial studies

How to build your Doppler

DOPPLER CODE

PROBE CODE

Doppler

DD-300	Basic
DD-301	Basic + Recharge
DD-700	HR Display
DD-701	HR Display + Recharge
DD-901	Tabletop + HR Display + Recharge

DD-330	Basic
DD-330R	Basic + Recharge
DD-770	HR Display
DD-770R	HR Display + Recharge

Probe

D2	2MHz fetal probe
D2W	2MHz waterproof fetal probe
D3	3MHz fetal probe
D3W	3MHz waterproof fetal probe
D5	5MHz vascular probe
D8	8MHz vascular probe
DPPG	Audio PPG probe - includes toe cuff