



## DIGIDOP DOPPLERS: ESSENTIAL FOR PODIATRY VASCULAR ASSESSMENTS

Podiatrists need reliable tools to assess blood flow in the feet and ankles, where vascular disease often first appears. DigiDop Dopplers by Newman Medical empower your practice to provide early detection, accurate diagnosis, and optimized treatment plans.

### Why Choose DigiDop?

- **Reliable:** 45+ years of Doppler expertise ensure consistent performance.
- **Investment Confidence:** 5-year warranty with no hidden fees for worry-free operation.
- **Exceptional Support:** Access first-class clinical support, online or in-person.
- **Ready to Ship:** Fast US delivery from our Colorado facility.
- **American-Made:** Trust the durability and precision of US manufacturing.
- **Value-Driven:** High-value benefits and features at a competitive price point.

### 5-YEAR WARRANTY

- All parts & labor
- No diagnostic fees
- No hidden fees
- No down time

### DigiDop Dopplers enhance your capabilities:

- **Early Detection:** Clearly assess blood flow, aiding in the early detection of vascular disease.
- **Monitor Progression:** Track changes in blood flow to evaluate treatment effectiveness.
- **Improved Outcomes:** Enhance diagnostic accuracy and optimize patient care plans.

**Choose DigiDop and discover how superior quality, dependable performance, and dedicated support can transform your podiatry practice.**



MADE IN  
  
USA

Smart  Recharge  
System

Scan or click  
to explore  
DigiDop Dopplers.





# Professional and Sensitive Dopplers

Newman Medical



Over **45 years** in the marketplace; a testament to our longevity and success



**Made in the USA** for superior quality and performance



**5-year all-inclusive warranty** for maximum protection and minimized downtime, headaches



**Best-in-class customer support**; we always answer the phone

## DigiDop Classic

- Standard size
- Superior battery endurance compared to competitors



## DigiDop II

- Compact size
- Comfortable palm-fitting design
- Equivalent battery endurance to competitors



## DigiDop 901

- Ideal for hospital use
- Clear stereo sound from dual top speakers
- Two probe cradles
- Standard drop-on charging pyramid
- Optional wall mount recharger



### Vascular Probes



**Model D5**  
5MHz Vascular Probe



**Model D8**  
8MHz Vascular Probe



**Model DPPG**  
Audio TBI PPG Probe

### Fetal Probes



**Model D2**  
2MHz Fetal Probe



**Model D2W**  
2MHz Waterproof Fetal Probe



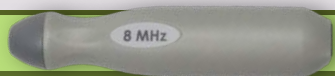
**Model D3**  
3MHz Fetal Probe



**Model D3W**  
3MHz Waterproof Fetal Probe

Interchangeable probes can be used on any DigiDop

### Vascular



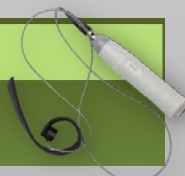
- Great sensitivity
- Ergonomic shape easy to hold, place in sterile glove finger for use in sterile fields
  - **D8 – 8 MHz** - best for shallow vessels like radial, ankle, foot, digits, penile
  - **D5 – 5 MHz** - wider beam, deeper penetration. Good for brachial, carotid, femoral, deep veins

### Fetal



- Great sensitivity
- Smooth shape, comfortable for patient, easy to hold and clean
  - **D3 – 3 MHz** - wide angle, ideal for early fetal hearts
  - **D3W** - a unique 3 MHz waterproof probe
  - **D2 – 2 MHz** - deeper penetration
  - **D2W** - 2 MHz - waterproof

### DPPG



- Unique audio PPG probe for use on digits. Great for toe-brachial studies

### How to build your Doppler

DOPPLER CODE

PROBE CODE

#### Doppler

DD-300	Basic
DD-301	Basic + Recharge
DD-700	HR Display
DD-701	HR Display + Recharge
DD-901	Tabletop + HR Display + Recharge

DD-330	Basic
DD-330R	Basic + Recharge
DD-770	HR Display
DD-770R	HR Display + Recharge

#### Probe

D2	2MHz fetal probe
D2W	2MHz waterproof fetal probe
D3	3MHz fetal probe
D3W	3MHz waterproof fetal probe
D5	5MHz vascular probe
D8	8MHz vascular probe
DPPG	Audio PPG probe - includes toe cuff