

EVERY EMERGENCY DEPARTMENT SHOULD HAVE A DEPENDABLE DOPPLER

Hand-held Dopplers are an essential tool in emergency departments for various reasons. Here are a few ways they can be used:

- Quick assessment of blood flow in cases of trauma, such as fractures and deep wounds.
- Non-invasive approach to assess circulation swiftly.
- Portability and lightweight design allow for effective utilization in emergencies.
- Fetal well-being evaluation following accidents, enabling monitoring of heart rate and placental flow.
- User-friendly for emergency personnel, as they require minimal training.



BEST DIGIDOP DOPPLER FOR YOUR EMERGENCY DEPARTMENT: OUR TOP PICK



- COMPACT SIZE - FITS IN POCKET
- COMFORTABLE PALM-FITTING DESIGN
- EQUIVALENT BATTERY ENDURANCE TO COMPETITORS

VASCULAR



FETAL



Scan or click to visit the Newman Medical family of Dopplers



NM0150D



Professional and Sensitive Dopplers

Newman Medical



Over **45 years** in the marketplace; a testament to our longevity and success



Made in the USA for superior quality and performance



5-year all-inclusive warranty for maximum protection and minimized downtime, headaches



Best-in-class customer support; we always answer the phone

DigiDop Classic

- Standard size
- Superior battery endurance compared to competitors



DigiDop II

- Compact size
- Comfortable palm-fitting design
- Equivalent battery endurance to competitors



DigiDop 901

- Ideal for hospital use
- Clear stereo sound from dual top speakers
- Two probe cradles
- Standard drop-on charging pyramid
- Optional wall mount recharger



Vascular Probes



Model D5
5MHz Vascular Probe



Model D8
8MHz Vascular Probe



Model DPPG
Audio TBI PPG Probe

Fetal Probes



Model D2
2MHz Fetal Probe



Model D2W
2MHz Waterproof Fetal Probe



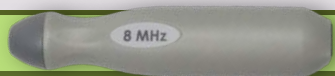
Model D3
3MHz Fetal Probe



Model D3W
3MHz Waterproof Fetal Probe

Interchangeable probes can be used on any DigiDop

Vascular



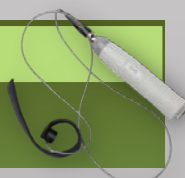
- Great sensitivity
- Ergonomic shape easy to hold, place in sterile glove finger for use in sterile fields
 - **D8 - 8 MHz** - best for shallow vessels like radial, ankle, foot, digits, penile
 - **D5 - 5 MHz** - wider beam, deeper penetration. Good for brachial, carotid, femoral, deep veins

Fetal



- Great sensitivity
- Smooth shape, comfortable for patient, easy to hold and clean
 - **D3 - 3 MHz** - wide angle, ideal for early fetal hearts
 - **D3W** - a unique 3 MHz waterproof probe
 - **D2 - 2 MHz** - deeper penetration
 - **D2W** - 2 MHz - waterproof

DPPG



- Unique audio PPG probe for use on digits. Great for toe-brachial studies

How to build your Doppler

DOPPLER CODE

PROBE CODE

Doppler

DD-300	Basic
DD-301	Basic + Recharge
DD-700	HR Display
DD-701	HR Display + Recharge
DD-901	Tabletop + HR Display + Recharge

DD-330	Basic
DD-330R	Basic + Recharge
DD-770	HR Display
DD-770R	HR Display + Recharge

Probe

D2	2MHz fetal probe
D2W	2MHz waterproof fetal probe
D3	3MHz fetal probe
D3W	3MHz waterproof fetal probe
D5	5MHz vascular probe
D8	8MHz vascular probe
DPPG	Audio PPG probe - includes toe cuff