

DIGIDOP II WITH AUDIO RECORDING Newman Medical



American-Made Quality



Includes labor, parts, and accidental breakage



Audio Recorder



Includes cords and probes



Waterproof fetal probe option



DigiDop

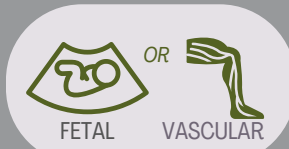
DigiDop II Audio Recording Models

- DD-770AR
- DD-770A
- DD-330AR
- DD-330A

Included



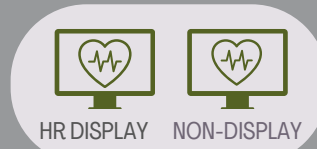
AUDIO RECORDER



FETAL

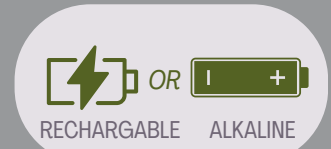
VASCULAR

Standard Options



HR DISPLAY

NON-DISPLAY



RECHARGABLE

ALKALINE

Confidently assess blood flow with the DigiDop II Audio Doppler.

Engineered for exceptional audio clarity and ease of use, the DigiDop II empowers healthcare professionals with reliable and accurate vascular and fetal assessments. Featuring advanced technology, a durable design, and an audio recording feature, the DigiDop II is the trusted choice for efficient and effective blood flow analysis in a variety of clinical settings.

Hear the Difference

- **Digital Sound Clarity (DSC™):** Amplifies the signal up to 6x for exceptional accuracy.
- **Audio Recording:** Capture 30-second audio recordings of vascular or fetal sounds for documentation and analysis.
- **American-made:** Guaranteed quality and craftsmanship.
- **Durable and reliable:** Features an unbreakable probe holder.
- **Interchangeable probes:** For maximum efficiency across various applications.

Confidence-Inspiring Warranty

- 5-year coverage for all parts and labor, with no hidden fees.
- Rechargeable convenience (on applicable models).

Newman Medical: Your Ultrasound Partner

- Pioneers in Doppler technology since the 1970s.
- Founders of Imex Medical Systems and Summit Doppler.
- Committed to continuous development of cutting-edge solutions.
- Focused on building long-term partnerships and exceeding customer expectations.

DigiDop Professional and Sensitive Dopplers

Over 45 years in the marketplace; a testament to our longevity and success

Made in the USA for superior quality and performance

5-year all-inclusive warranty for maximum protection and minimized downtime, headaches

Best-in-class customer support; we always answer the phone

DigiDop Classic

- Standard size
- Superior battery endurance compared to competitors



DigiDop II

- Compact size
- Comfortable palm-fitting design
- Equivalent battery endurance to competitors
- Audio recorder option



DigiDop 901

- Ideal for hospital use
- Clear stereo sound from dual top speakers
- Two probe cradles
- Standard drop-on charging pyramid
- Optional wall mount charger



Vascular Probes

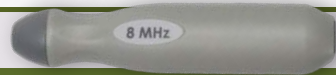


Fetal Probes



Interchangeable probes can be used on any DigiDop

Vascular



- Great sensitivity
- Ergonomic shape easy to hold, place in sterile glove finger for use in sterile fields
 - **D8 – 8 MHz** - best for shallow vessels like radial, ankle, foot, digits, penile
 - **D5 – 5 MHz** - wider beam, deeper penetration. Good for brachial, carotid, femoral, deep veins

Fetal



- Great sensitivity
- Smooth shape, comfortable for patient, easy to hold and clean
 - **D3 – 3 MHz** - wide angle, ideal for early fetal hearts
 - **D3W** - a unique 3 MHz waterproof probe
 - **D2 – 2MHz** - deeper penetration
 - **D2W – 2 MHz** - waterproof

DPPG



- Unique audio PPG probe for use on digits. Great for toe-brachial studies

How to build your Doppler

DOPPLER CODE

PROBE CODE

Doppler

DigiDop "Classic"	DD-300	Basic
	DD-301	Basic + Recharge
	DD-700	HR Display
	DD-701	HR Display + Recharge
	DD-901	Tabletop + HR Display + Recharge
DigiDop II	DD-330	Basic
	DD-330R	Basic + Recharge
	DD-770	HR Display
	DD-770R	HR Display + Recharge

Probe

D2	2MHz fetal probe
D2W	2MHz waterproof fetal probe
D3	3MHz fetal probe
D3W	3MHz waterproof fetal probe
D5	5MHz vascular probe
D8	8MHz vascular probe
DPPG	Audio PPG probe - includes toe cuff