

DIGIDOP "CLASSIC" DD-300

Newman Medical



VASCULAR



NON-DISPLAY



ALKALINE



American-Made
Quality



Includes labor, parts,
and accidental
breakage



Includes cords
and probes

VASCULAR | NON-DISPLAY DOPPLER SYSTEM



The **DigiDop 300 non-display digital Doppler system** has unique features not found in other Doppler systems such as Digital Sound Clarity™.

Each DigiDop is designed with the sensitivity you need while also designed to be tough and last through years of everyday office use. All our products are **Made in the USA** in Colorado. Each Newman Medical Doppler and probe must pass a series of comprehensive tests to assure quality and the durability of each product.

American-Made Quality

- **Better Sound** - Digital Sound Clarity DSC™ produces up to 6x signal compared to other Dopplers
- **Better Warranty** - 5 year honest warranty - all parts & labor
 - Includes rechargeable batteries on rechargeable units
- **Better Support & Service** - knowledgeable staff and guaranteed service
- All Dopplers are designed, manufactured, and serviced in Colorado, U.S.
- 'Unbreakable' magnetic probe holder
- All probes are interchangeable

Newman Medical History & Commitment

- The Newman family has been involved with the Doppler industry and ultrasound diagnostics since the 1970s
- The Newman family was a founding partner of both Imex Medical Systems (Nicolet/Natus) and Summit Doppler
- Newman Medical is committed to ongoing product development and bringing high-quality diagnostic products to market
- Newman Medical has a relentless focus on service and establishing long term relationships with our customers

First-Class Support

- Newman Medical boasts the industry's best and most tenured customer service team with 25+ years' average experience
- Newman's extensively trained field representatives are always available to support physician needs
- Newman Medical offers both on-line and in-person clinical support to physicians

DIGIDOP "CLASSIC" DD-300

VASCULAR | NON-DISPLAY DOPPLER SYSTEM

Newman Medical

Accessories



Wall/Table Base
(ACC-101)



Roll Stand
(STND-101)



Carry Bag
(ACC-170)



Ultrasound Gel
8.8oz | 2.1oz
(GEL-110) (GEL-100)

ALWAYS BE READY!

Ask about the
rechargeable
version of the
DigiDop "Classic"
Non-Display
Vascular Doppler!

Smart Recharge
System



Don't forget about our
Doppler Recycling
Program

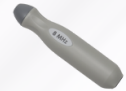
Ordering Information

Doppler System

SKU	DESCRIPTION
DD-300	Non-Display Vascular Doppler System

Vascular Probe Choices

SKU	DESCRIPTION
D5	5 MHz
D8	8 MHz



Accessories

SKU	DESCRIPTION
ACC-101	Wall/Table Base
ACC-170	Carry bag for handheld Dopplers
STND-101	Roll stand with basket
GEL-110	Ultrasound gel 8.8oz 12/box
GEL-100	Ultrasound gel 2.1oz 12/box

DD-300 Technical Specifications

Dimensions: 150 x 65 x 35 mm (6 x 2.5 x 1.25 in)

Weight: 340 grams (12 ounces)

Battery type: 3 x 1.5 nominal volts (AA)

Level of protection against electrical shock: Type B Applied Part, Class II Equipment

Comply with the following standards: IEC60101-1, IEC60601-2, IEC60601-2-37

Operating temperature: 10° ~ 40°C (50° ~ 104°F)

Operating humidity: 30% ~ 75%

Transport/storage temperature: -20° ~ 50°C (-4° ~ 122°F)

Transport/storage humidity: 5% ~ 90%, non-condensing

Battery life (AA): 800 minutes (Alkaline)

Heart rate range: 50 ~ 220 BPM

Heart rate calculation accuracy: ±3 BPM

Audio cable interface: 3.5mm stereo plug

Audio output power: 1.1W

GTIN: 852785008869

The DigiDop PRODUCT FAMILY

DigiDop "Classic"



- Standard size
- Longer battery life than similar competitor products

DigiDop II



- Smaller size
- Ergonomic - fits comfortably in your hand
- Similar battery life to competitor products

DigiDop 901 Tabletop

- Ideal for hospital use
- Great room-filling sound from two speakers on top
- Two probe cradles
- Standard drop-on charging pyramid
- Optional wall mount recharger

